

Randall's Adventure & Training® / ESEE Knives®



P.O. Box 99 - Gallant, AL 35972
Ph: (256) 613-0372 - Fax: (256) 570-0175
www.eseeknives.com
www.jungletraining.com



If you purchased the IZULA® (without kit), the package includes: IZULA® knife, molded sheath and clip plate. The standard IZULA® does not include Micarta handle scales (optional purchase through our dealer network).



Izula Without Kit

If you purchased the IZULA® with kit, your package includes: IZULA® Knife, Molded Sheath, ParaCord, Split Rings, Ferro Fire Starting Rod, Emergency Whistle, Snap Hook, Clip Plate & Hardware. See right side of this page for uses.



Izula With Kit

How To Cord Wrap A Skeletonized Handle



Note: Our knives are made from high carbon 1095 steel. And while 1095 is a top choice for professional cutlery designed for hard use, it will rust and stain if not properly cared for. It is the user's responsibility to keep the blades properly lubricated and cleaned. We suggest using a dry film rust inhibitor on the blade.

All of our knives are made in the USA with absolute attention to quality materials and care during the manufacturing process. We stand behind our knives with a 100% lifetime, unconditional guarantee. If your ESEE knife should ever fail we will repair or replace it. This warranty follows the knife throughout its life, anywhere in the world.

Randall's Adventure and Training® is a recognized leader in Latin American jungle and domestic wilderness training. As a professional wilderness training team and hard-use gear manufacturer, we understand the unique needs of personnel operating in jungle and woodland environments. If you would like to schedule a class in jungle or wilderness survival, land navigation, wilderness rope SRT / high-angle rescue, wilderness medicine, team building or SAR, then email us at info@jungletraining.com.

IZULA®, IZULA-II & CANDIRU® Kit Model Info And Tips

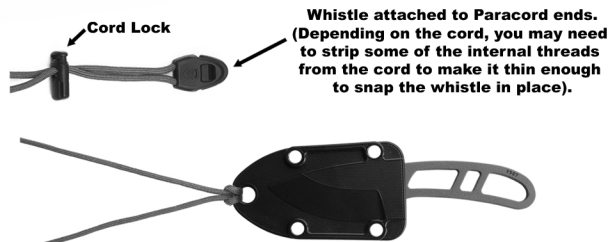
Snap Hook



Belt Carry Using Cord Lock & Paracord



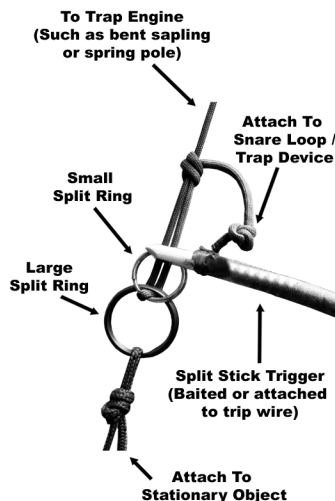
Lanyard & Cord Lock



WARNING: Neck carry with a paracord lanyard can be deadly! We suggest using a break-away device or a low-tensile cordage if you intend to carry the IZULA with a neck lanyard. The enclosed paracord should only be used to hang the IZULA sheath from gear that will not cause a potential entanglement hazard!

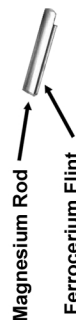
Split Rings (Alternate Uses)

In addition to attaching the Izula for carry, the split rings can be used for last-ditch trap triggers.



Fire Flint Use

Hold the fire starter over the top of your tinder, then place the knife edge at the top of the flint and quickly rip the fire starter backwards while holding your knife steady. In other words, move the fire starter and keep the striking edge static. Keep striking until your sparks hit the tinder and ignite it. To help light difficult tinder, scrape shavings from the magnesium rod into your tinder. Magnesium shavings burn extremely hot.



Visit www.jungletraining.com/training for more info and free wilderness training information.